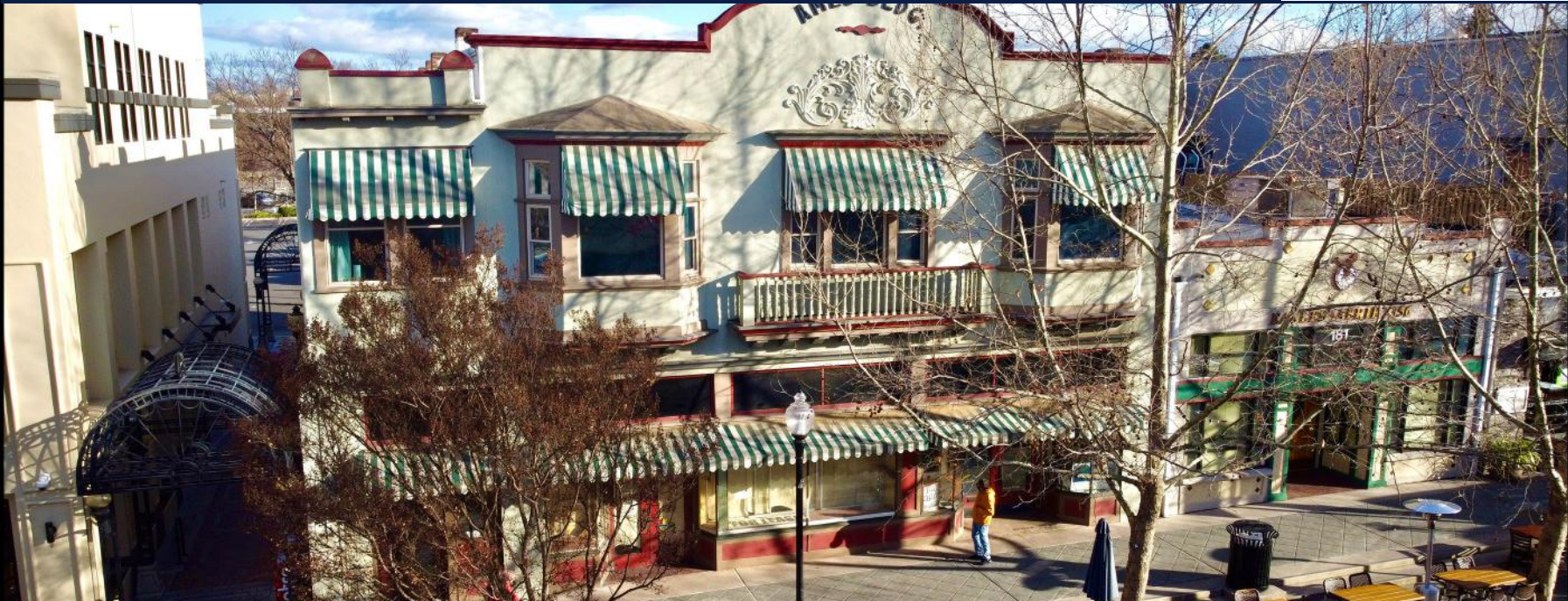


# FOR SALE 169 CASTRO STREET

DOWNTOWN | +/- 7,519 SQ FT | MOUNTAIN VIEW, CA



## CONTACT

Chad Martin  
650.815.9851  
DRE # 02106951  
[Chad.Martin@StetsonEarhart.com](mailto:Chad.Martin@StetsonEarhart.com)

Giovanni Haughton  
650.387.1197  
DRE # 02107010

Brad Martin  
408.828.4806  
DRE # 00867650

[Gio.Haughton@StetsonEarhart.com](mailto:Gio.Haughton@StetsonEarhart.com) [Brad.Martin@StetsonEarhart.com](mailto:Brad.Martin@StetsonEarhart.com)

## PROPERTY HIGHLIGHTS

- RARE PRIME DOWNTOWN MOUNTAIN VIEW LOCATION
- PROMINENT VISIBILITY AND FOOT TRAFFIC ON CASTRO
- PLANNED REDEVELOPMENT BEHIND BUILDING
- GROUND FLOOR RETAIL WITH APARTMENTS ABOVE
- HIGH CEILINGS 1st AND 2nd FLOORS
- SHARED PATIO AND COMMON AREA ON SECOND FLOOR
- 1 BLOCK TO CALTRAIN AND LIGHT RAIL STATION

STETSON EARTHART. 530 LYTTON AVE. 2ND FLOOR. PALO ALTO, CA 94301

ALL RIGHTS RESERVED. THE INFORMATION CONTAINED IN THIS COMMUNICATION IS STRICTLY CONFIDENTIAL. THIS INFORMATION HAS BEEN OBTAINED FROM SOURCES BELIEVED TO BE RELIABLE BUT HAS NOT BEEN VERIFIED. NO WARRANTY OR REPRESENTATION, STETSON EARTHART 530 LYTTON AVE. 2ND FLOOR. PALO ALTO, CA 94301 CHANGE OF PRICE, RENTAL OR OTHER CONDITIONS, WITHDRAWAL WITHOUT NOTICE, AND TO ANY SPECIAL LISTING CONDITIONS IMPOSED BY THE PROPERTY OWNER(S). ANY PROJECTIONS, OPINIONS OR ESTIMATES ARE SUBJECT TO UNCERTAINTY AND DO NOT EXPRESS OR IMPLIED, IS MADE AS TO THE CONDITION OF THE PROPERTY (OR PROPERTIES) REFERENCED HEREIN OR AS TO THE ACCURACY OR COMPLETENESS OF THE INFORMATION CONTAINED HEREIN, AND SAME IS SUBMITTED SUBJECT TO ERRORS, OMISSIONS, SIGNIFY CURRENT OR FUTURE PROPERTY PERFORMANCE.



# BUILDING PHOTOS



**STETSON EARTHART. 530 LYTTON AVE. 2ND FLOOR. PALO ALTO, CA 94301**

ALL RIGHTS RESERVED. THE INFORMATION CONTAINED IN THIS COMMUNICATION IS STRICTLY CONFIDENTIAL. THIS INFORMATION HAS BEEN OBTAINED FROM SOURCES BELIEVED TO BE RELIABLE BUT HAS NOT BEEN VERIFIED. NO WARRANTY OR REPRESENTATION, EXPRESS OR IMPLIED, IS MADE AS TO THE CONDITION OF THE PROPERTY (OR PROPERTIES) REFERENCED HEREIN OR AS TO THE ACCURACY OR COMPLETENESS OF THE INFORMATION CONTAINED HEREIN, AND SAME IS SUBMITTED SUBJECT TO ERRORS, OMISSIONS, CHANGE OF PRICE, RENTAL OR OTHER CONDITIONS, WITHDRAWAL WITHOUT NOTICE, AND TO ANY SPECIAL LISTING CONDITIONS IMPOSED BY THE PROPERTY OWNER(S). ANY PROJECTIONS, OPINIONS OR ESTIMATES ARE SUBJECT TO UNCERTAINTY AND DO NOT SIGNIFY CURRENT OR FUTURE PROPERTY PERFORMANCE.



# PROPERTY LOCATION AND INFORMATION



APN: 158-20-12

Lot Size Ac/ Sq Ft: 0.1171 / 5103

Use / Zoning: Retail Trade / (P19)

Historic Designation

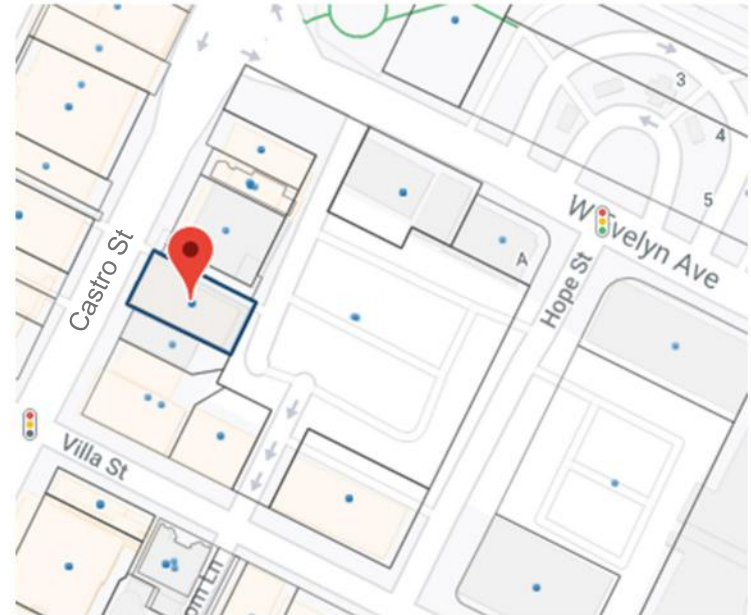
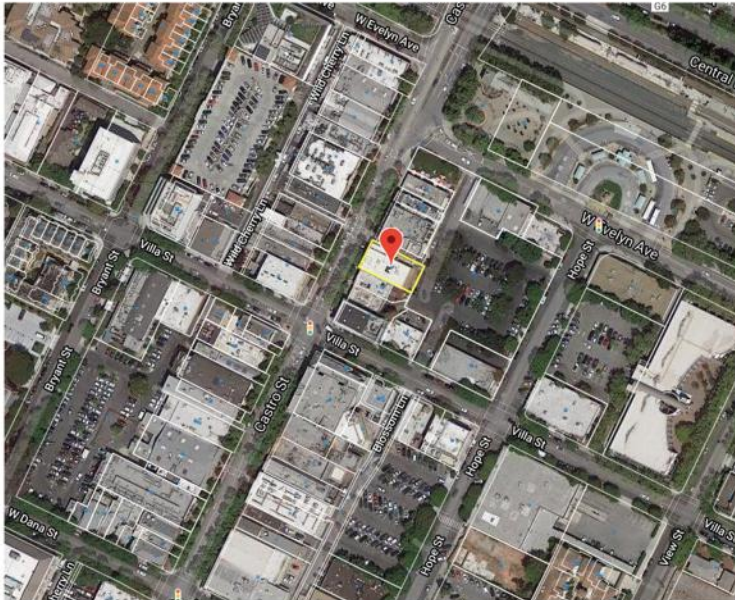
Building SF: +/- 7519 (per public record)

5 apartments (4 above 1 ground level)

Address: 169 Castro Street, Mountain View, CA 94041

**RENOVATION OPPORTUNITY**

**DO NOT DISTURB TENANTS**



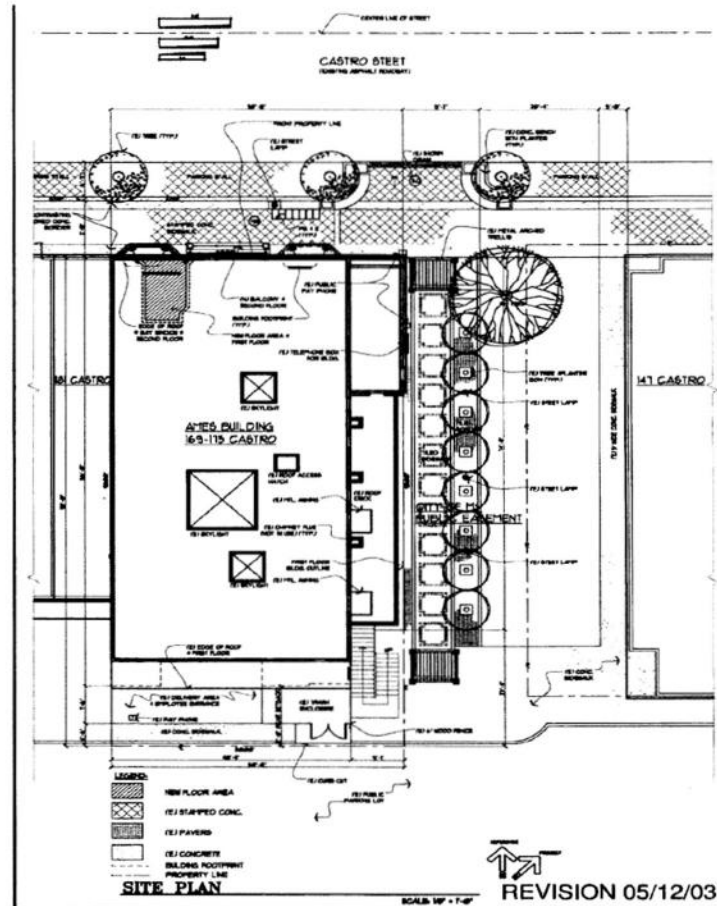
**STETSON EARTHART. 530 LYTTON AVE. 2ND FLOOR. PALO ALTO, CA 94301**

ALL RIGHTS RESERVED. THE INFORMATION CONTAINED IN THIS COMMUNICATION IS STRICTLY CONFIDENTIAL. THIS INFORMATION HAS BEEN OBTAINED FROM SOURCES BELIEVED TO BE RELIABLE BUT HAS NOT BEEN VERIFIED. NO WARRANTY OR REPRESENTATION, EXPRESS OR IMPLIED, IS MADE AS TO THE CONDITION OF THE PROPERTY (OR PROPERTIES) REFERENCED HEREIN OR AS TO THE ACCURACY OR COMPLETENESS OF THE INFORMATION CONTAINED HEREIN, AND SAME IS SUBMITTED SUBJECT TO ERRORS, OMISSIONS, CHANGE OF PRICE, RENTAL OR OTHER CONDITIONS, WITHDRAWAL WITHOUT NOTICE, AND TO ANY SPECIAL LISTING CONDITIONS IMPOSED BY THE PROPERTY OWNER(S). ANY PROJECTIONS, OPINIONS OR ESTIMATES ARE SUBJECT TO UNCERTAINTY AND DO NOT SIGNIFY CURRENT OR FUTURE PROPERTY PERFORMANCE.

# FLOOR PLAN / SPACE INFORMATION

167-169 CASTRO STREET

## FLOOR PLAN



## EXITING PLANS



Retail Ground floor

- 14ft ceilings
- +/- 3,000 (Total)
- 2 units
- Glass Storefronts

5 Apartments

- 1 - Ground Floor
- 4 - Second Floor

- High Ceilings
- Common Area
- Patio Area

Chad Martin  
650.815.9851  
DRE# 02106951  
Chad.Martin@StetsonEarhart.com

Giovanni Haughton  
650.387.1197  
DRE# 02107010  
Gio.Haughton@StetsonEarhart.com

Brad Martin  
408.828.4806  
DRE# 00867650  
Brad.Martin@StetsonEarhart.com

STETSON EARTHART. 530 LYTTON AVE. 2ND FLOOR. PALO ALTO, CA 94301